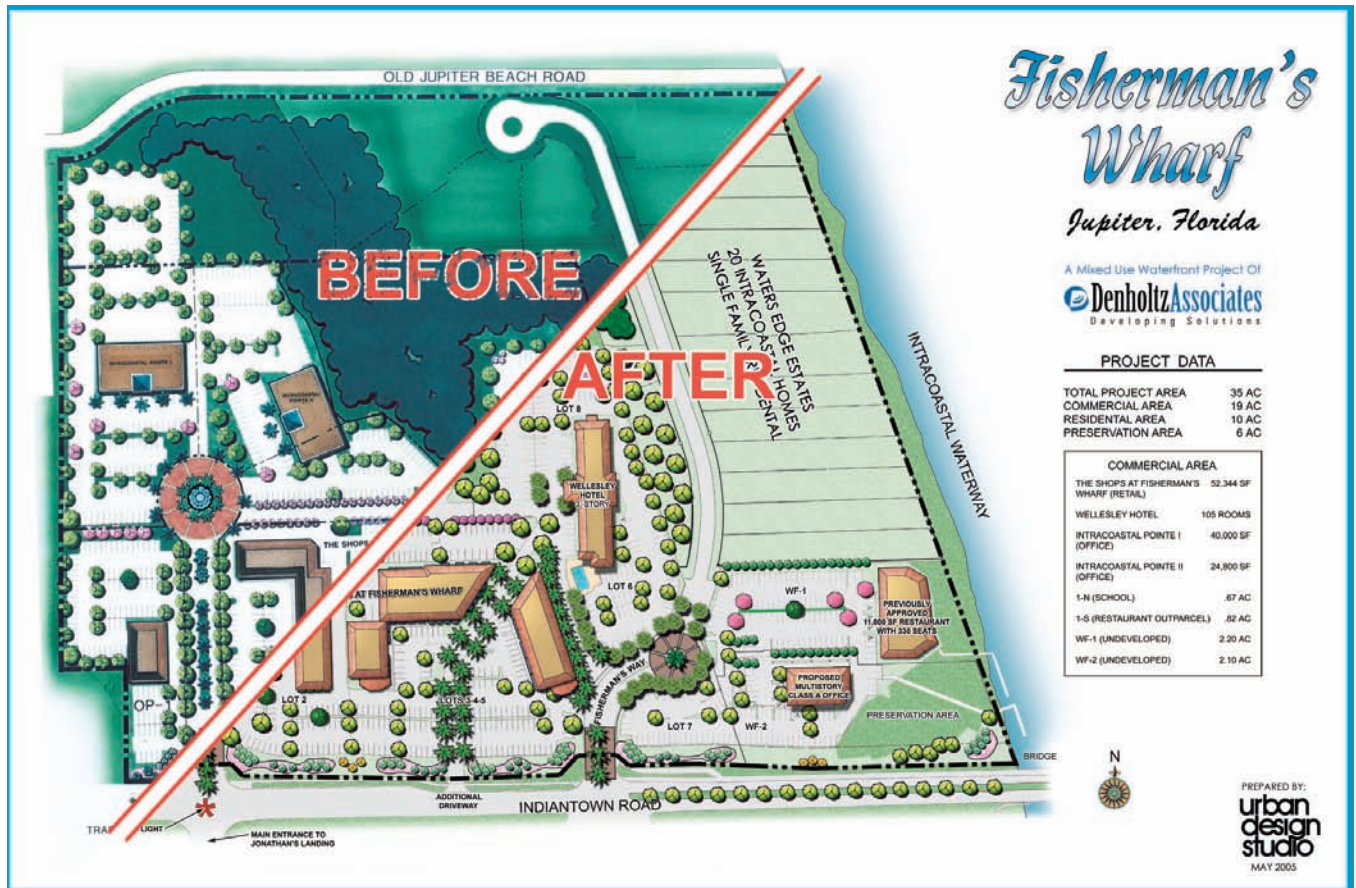


FISHERMAN'S WHARF

JUPITER, FLORIDA



Fisherman's Wharf is a 35-acre commercial/mixed use development with two retail complexes, a three-story luxury hotel and office space in Jupiter, FL. Denholtz Associates, a premier development company contracted Urban Design Kilday Studios to recreate a graphic to supersede an obsolete master plan graphic. The project started with a digital scan of the original document

and a new CAD site plan. The UDKS Graphics Department then imported the CAD information into Photoshop where a hybrid of the old graphic was created and incorporated with the new CAD updates. Once the plan was accurate and up to date, the next step was to create a newer, modern feel to the graphic while maintaining the hand drawn quality of the original graphic for marketing purposes.

Client: Denholtz Associates